

CV5XXX 13.56MHz Access Control Door Reader

CV5XXX Access Control Door Reader Series are highly configurable for multi-ISO technology 13.56 MHz ISO14443A/B, ISO15693 in read and write. It offers variety of readers with Pin pad, LCD in different size for both indoor/outdoor (IP65), and multi-interface to work and integrate the most physical access controllers to build advanced security system.

➤ The family members are:

CV5100-X-XX	ISO15693, ISO14443A and ISO14443B
CV5600-X-XX	Read/Write MIFARE® Secure Sector
CV5600S-X-XX	MIFARE® Serial Number Only (UID)

Advantages

- ✚ 45cm Pigtail or plug connector with screw terminal is available on request
- ✚ Build-in TCP/IP (CV5XXX-X-2B)
- ✚ Feature with relay on request (CV5XXX-X-2B)
- ✚ 4 bit or 8 bit Burst output format
- ✚ Can be installed on metal surface
- ✚ Indoor and Outdoor (IP65, Electric epoxy potted) version for selection
- ✚ Hardware Watchdog and voltage monitoring enhance the system reliability
- ✚ Firmware can be changed to meet customer's request
- ✚ Built-in memory to enhance security in transaction
- ✚ Supporting multi block transfer
- ✚ Auto PPS (PICC)
- ✚ Authentication key available on request.

Readers and cards require matching keys to function. All RF data transmission between the card and reader is encrypted by using a secure algorithm. The key management system reduces the risk of compromised data or duplicated cards.

Product Images



0C Mount Reader
26*68*19mm



2B Wall Mount Reader with LCD
120*90*25mm



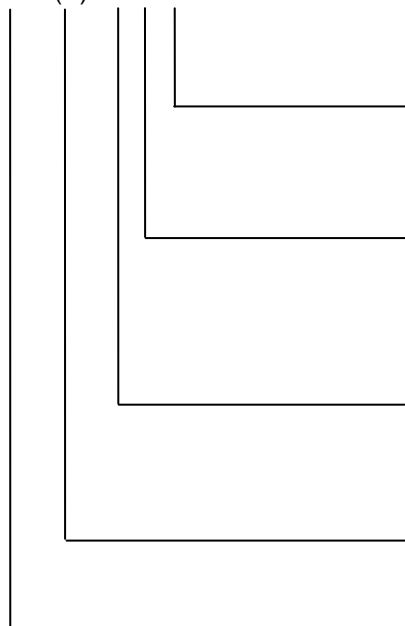
0D Mullion Mount reader
118*44*20mm



0E Mini Reader
94*43*18mm

Order Code

CV5X00 (S) - X- XX



Housing design

- B - Indoor, Outdoor
- C - Outdoor, IP65
- D - Outdoor, mullion
- E - Outdoor, mini

Features

- 0 - Card only
- 2 - Card + PIN + LCD

Interface

- 2 RS232, Wiegand 26(default), ABA1/2, Clock & Data
- 4 RS485, Wiegand 26(default), ABA1/2, Clock & Data
- X RS232, RS485, Wiegand 26 (default), ABA1/2, Clock & Data
- T TCP/IP, Wiegand 26 (default) , ABA1/2, Clock & Data (CV5XXX-X-2B)

S - Serial number only (UID)

Technology

- 5100 - ISO15693, ISO14443A and ISO14443
- 5600 - Read/Write MIFARE® Secure Sector

Specifications

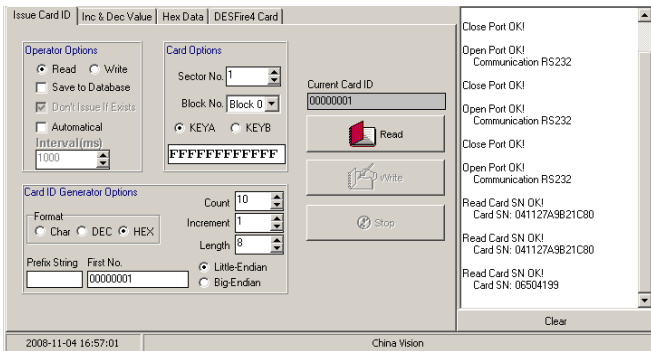
Model	CV5100-X-XX	CV5600-X-XX	CV5600S-X-XX
Operating Frequency	13.56 MHz	13.56 MHz	
Standard	ISO15693, ISO14443 A and B	ISO14443 A MIFARE®	ISO14443 A MIFARE®
Data Type	Read/write: MIFARE® secure sector and ISO15693	Read/write: MIFARE® secure sector	Serial number only
Readable Cards	ISO15693, TagIt, I-Code, My-D, MIFARE® Standard, MIFARE Ultralight®, MIFARE® Classic 4K, MIFARE® Pro/Prox, SLE 55Rxx,SLE66CL160S, Other ISO14443 compatible cards	Read/Write : MIFARE® Classic 1K, MIFARE® Classic 4K, MIFARE Ultralight®, MIFARE® Pro/Prox and ISO14443A compatible card	Read only: MIFARE® Classic 1K, MIFARE® Classic 4K, and other ISO14443A compatible cards
Power Supply	9V DC (9-12V), <150mA		
LCD	Blue LCD dots matrix with backlight, 16 characters each line * 2 lines (CV5XXX-X-2B)		
Keypad	3*4 keypad with backlight, 4bit or 8 bit output		
Interface	Wiegand26 (default) (26-56 selectable) / RS232 / RS485 / ABA1 and 2, Clock & Data TCP/IP network version available as option; others on request		
Indicators	LED and Buzzer		
Reading Distance	50-70mm for ISO14443A (depending on transponder)	50 -70mm (depending on transponder)	

Operating Temperature	-25°C ~ +65°C / -13°F ~ +149°F
Storage Temperature	-25°C ~ +70°C / -13°F ~ +158°F
Operating Humidity	0 ~ 95% relative humidity non-condensing
Connection	45cm Pigtail or plug connector with screw terminal is available on request
Housing Material	PC for 0D/2B casing, other ABS
Protection Class	IP65, electric epoxy potted for harsh environment

Specifications are subject to change without notice.

Relative Products for CV5600-X-XX read/write Mifare Secure Sector

Professional card programming software CVReader Card Programmer is provided for programming card ID, increment/decrement for MIFARE® Classic 1K, MIFARE® Classic 4K



- ✧ A few numbers of cards can be programmed by CV5600-X-XX with the card programming software.
- ✧ Professional desktop reader CV6XXX is designed for card batch programming with the card programming software.
- ✧ Encrypted reader compatible with CV5600-X-XX and cards available for high security solution.

Hardware Testing Package (HTP)



A plug & play Hardware Testing Package (HTP) is provided to ease your fast testing and evaluation.

Package list:

- Testing Board
- Power supplier
- RS232 cable
- 4 wire cable
- Testing Cards
- RS232 / RS485 converter

Configuration

