

CV9600(S)-X-XX Economic access control system

CV9600T(S)-X-XX Dual access control + time attendance system

CV9600(S)-X-XX is economic access control terminal. **CV9600T(S)-X-XX** is access control terminal with [events recording](#) function. It's a contactless reading MIFARE® Secure Sector or read only (UID) device that supports ISO14443A MIFARE®.

The terminal features with stand-alone mode, network mode via RS485 or build-in TCP/IP; 512 cardholders can be registered, and event records reach up to 1,000 [CV9600T(S)-X-XX].

The terminal features toggle function, so the door could be opened for a specific period of time and closed by presenting card, it's suitable for frequent access place such as hotel, classroom, hospital, etc. It also features an external reader for anti-passing back (Wiegand port) for high security.

Powerful and friendly application software is offered for access control & time attendance solution with integrated user management, which is designed for single or network management on CV9600(S)-X-XX Terminal by simple one-click solution to literally get complete monthly T&A report for all users. SDK is also open for customer's further development in short time.

➤ **The family members are:**

Access Control

CV9600-X-0C	Economic access control system, Card Only, MIFARE® Secure Sector
CV9600-X-0D	Mullion mount Economic access control system, Card Only, MIFARE® Secure Sector
CV9600S-X-0C	Economic access control system, Card Only, MIFARE® Serial Number Only
CV9600S-X-0D	Mullion mount Economic access control system, Card Only, MIFARE® Serial Number only

Access Control with Time Attendance function

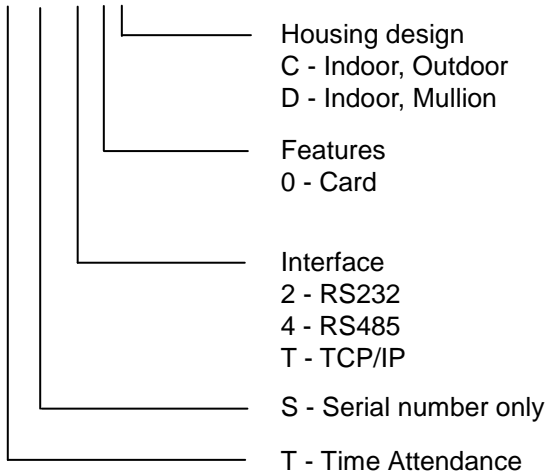
CV9600T-X-0C	Dual Access control + time attendance, Card Only, MIFARE® Secure Sector
CV9600T-X-0D	Mullion mount Dual Access control + time attendance, Card Only, MIFARE® Secure Sector
CV9600TS-X-0C	Dual Access control + time attendance, Card Only, MIFARE® Serial Number Only
CV9600TS-X-0D	Mullion mount Dual Access control + time attendance, Card Only, MIFARE® Serial Number Only

Advantages

- ✦ Stand-alone mode and network mode
- ✦ Guarantee that the record does not lose
- ✦ Adjust Controller time
- ✦ Dual function: access control with real time clock and 1,000 events [(CV9600T(S)-X-XX)]
- ✦ Build-in TCP/IP interface optional for networking
- ✦ Up to 512 user, including one master card
- ✦ External reader for anti-passing (Wiegand port)
- ✦ Housing sabotage alarm
- ✦ All I/Os and operating times user keypad programmable
- ✦ Toggle mode of door opening for a specific period of time, suitable for frequently in/out place
- ✦ Self diagnostics
- ✦ Watch-dog timer & power on reset
- ✦ Duress alarm in case of emergency

Order Code

CV9600(T)(S)-X-XX



Product Images



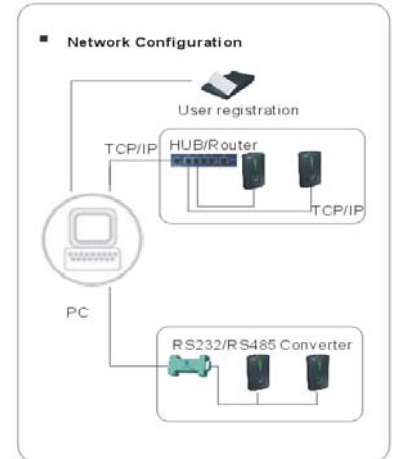
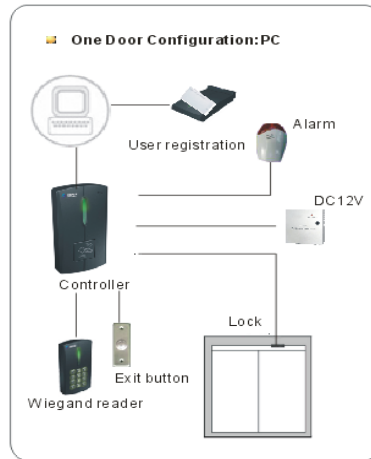
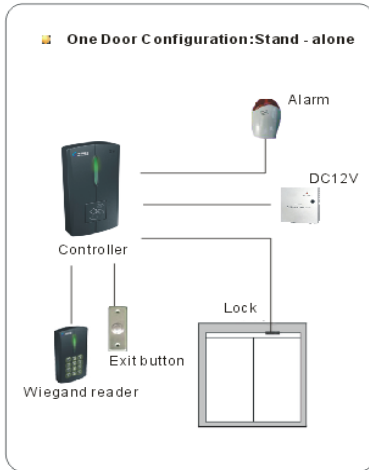
CV9600(S)-X-0C	CV9600(S)-X-0D
CV9600T(S)-X-0C	CV9600T(S)-X-0D
126*68*19mm	118*44*20mm

Specifications

Model	CV9600(T)-X-XX	CV9600(T)S-X-XX
Supporting card	MIFARE® and other ISO14443A compatible card	
Read and write	Read data from user defined sector of MIFARE® card	Read only UID of MIFARE® and other ISO14443A card
Power Supply	9V DC (9-24V), <150mA	
Cardholder	512, including one master card	
Events	1,000 records with real time clock (RTC) [CV9600T(S)-X-XX]	
Stand alone	Yes	
Network	Yes, via RS485 (up to 98 units) or build-in TCP/IP	
Communication	9600 -115200 bit/s (default 9600)	
APB	External Wiegand 26/34 reader	
Memory	32K Byte EEPROM	
Alarm	Door non-closed detection; Door broken alarm;Housing sabotage alarm; Duress alarm in case of emergency	
Input device	2 inputs (exit button, door state sensor)	
Output device	2 relay outputs	
Reading distance	50mm (depending on transponder)	
Indicators	Buzzer and LED	
Housing Material	PC for CV9600(T)(S)-X-0D, others ABS	
Indoor / outdoor	Both, potted version (IP65) available on request	
Temperature range	-20°C ~ +60°C / -4°F ~ +140°F	
Relative humidity	10-95% (non condensing)	

Specifications are subject to change without notice.

Configuration



Relative Products



Software Development Kit

IOAccess SDK is software development kit worked with CiVinTec Access Control & TA terminal for second development. It includes API, Host Demo, user manual and program example. It's developed by C++builder developing tool on Windows Operating system and GCC developing tool on Linux OS, compatible to VC,VB/VB.NET,JAVA,C++,C#.NET, DELPHI etc.



Access Control & Time Attendance Software

- Access Control Software features to control network of Civintec devices by easy connectivity with PC. It's easy operation suitable for small-to-large sized organizations.
- Time Attendance Software is designed for one-click solution to literally get complete monthly T&A reports for all users. Data can be exported for further processing.



Hardware Testing Package (HTP)

A plug & play Hardware Testing Package (HTP) is provided to ease your fast testing and evaluation. Package list:

- Testing Board
- Power supplier
- RS232 cable
- Wire cable
- Internet cable
- Testing Cards
- RS232 / RS485 converter



Relative Hardware

- CV9600(S)-X-XX Serial Number series can register a few number cards on stand-alone application, and professional desktop reader CN6XX is required for card batch issuing on stand-alone or network application. CN6XX is required for card programming on stand alone or network application
- Full range of cards and tags available to meet complete solution